

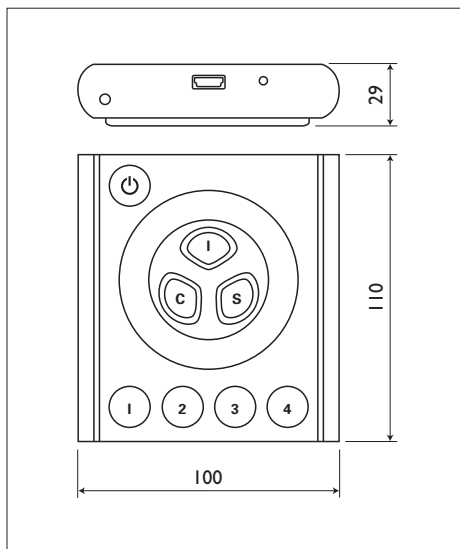


# ColourChaser Touch

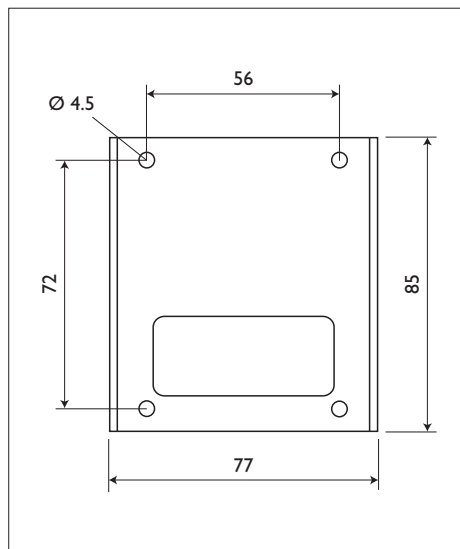
Installation Guide

**PHILIPS**

## Dimensions



*ColourChaser Touch - Dimensions in mm*



*Bracket - Dimensions in mm*

# Content

2	<b>Dimensions</b>
4	<b>Safety Information</b>
5	<b>Introduction</b>
6	<b>Installation</b>
8	<b>Connections</b>
8	Controller to power supply
9	Power supply to fixtures
10	AC power supply cable plug
11	<b>Setup</b>
11	Introduction
11	Software installation
12	Fixture setup
17	<b>Troubleshooting</b>
18	<b>Specifications</b>
18	Technical data
19	Ordering information
20	<b>Quick Guide</b>

# Safety Information

**Warning!** This product is not for household use.

Read this manual before installing and operating the controller; follow the safety precautions listed below, and observe all warnings in this manual.



## Preventing electric shocks

- Always ground (earth) the power supply.
- Use only a source of AC power that complies with local building and electrical codes, and that has both overload and ground-fault protection.
- If the controller or power supply are in any way damaged, defective, wet, or show signs of overheating, disconnect the power supply from AC power and contact your supplier
- Do not install or use the device outdoors. Do not spray with or immerse in water or any other liquid.
- Do not remove any covers or attempt to repair the controller or power supply. Refer any service to Philips.



## Disposing of this product

Philips products are supplied in compliance with Directive 2002/96/EC of the European Parliament and of the Council of the European Union on WEEE (Waste Electrical and Electronic Equipment), as amended by Directive 2003/108/EC, where applicable.

# Introduction

## About the ColourChaser Touch

The ColourChaser Touch is a lighting controller for DMX controllable color changing fixtures (luminaires). Programmed with each fixtures unique color curve, it provides the simplest, yet most powerful interface ever developed to control and match colors from multiple sources (RGB, RGBW, CMY and CMYK).

## Package contents

The ColourChaser Touch package contains the following items.

- ColourChaser Touch Controller
- 48V Power over Ethernet (POE) power supply
- CD-ROM with documentation and ColourChaser Designer software
- 5 m UTP patch cable
- 1.5 m USB cable

## About this document

This guide describes how to install and set up the ColourChaser Touch controller.

For a description of how to operate the controller, please refer to the ColourChaser Touch Quick Guide (Instruction for use).

For help with ColourChaser Designer, refer to the program's online help.

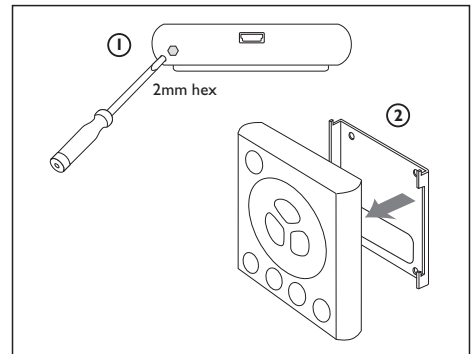
For installation and setup of fixtures, please refer to their user manuals.

# Installation

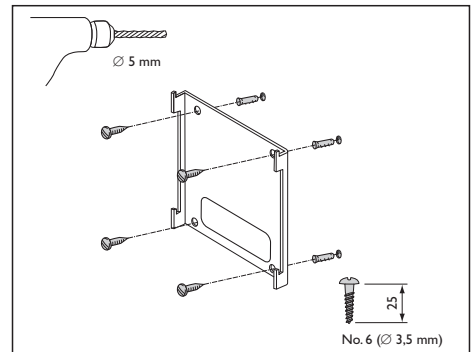
## Controller and bracket

The ColourChaser Touch is designed for wall mounting using the included bracket. To mount:

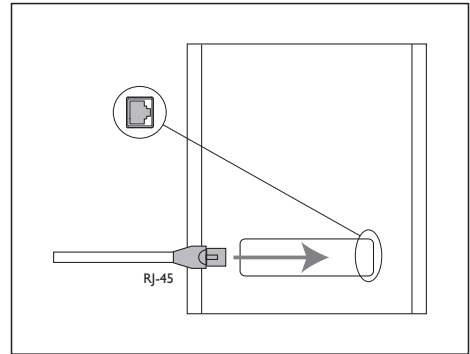
- 1 Loosen the set screw on the bottom of the ColourChaser Touch with a 2 mm hex wrench and remove the wall bracket.



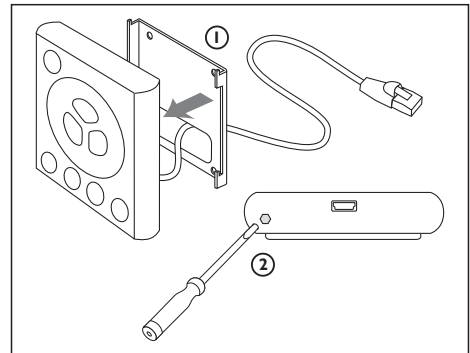
- 2 Center the bracket on the desired mounting position with the hooks pointing up.
- 3 Fasten the bracket to the wall with four suitable screws (not included).



- 4 Plug the included 5 m UTP patch cable into the RJ-45 socket on the back of the controller (or use another UTP patch cable with a maximum length of 40 meter).



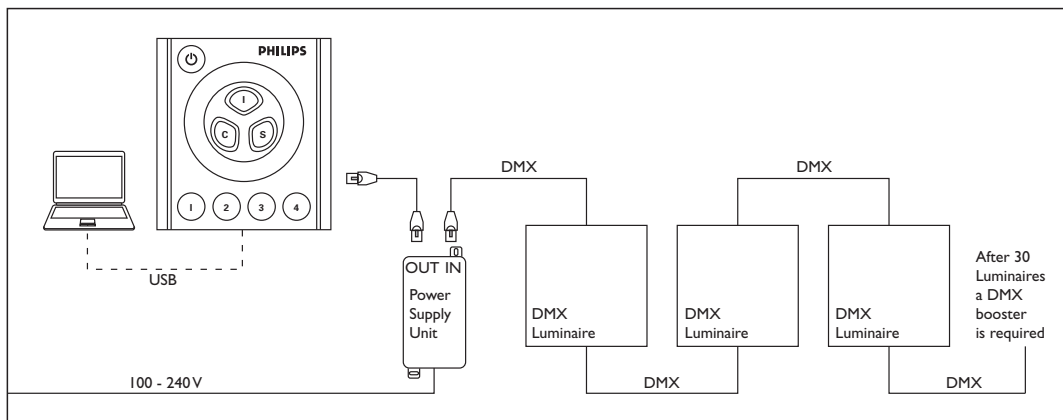
- 5 Place the controller on the bracket and slide it down over the hooks.
- 6 Tighten the set screw a few turns to hold the controller in place. Do not over tighten: stop as soon as you feel light resistance!



### Power supply

Install the power supply in a dry location within a 40 meter cable run of the controller.

## Connections



### Controller to power supply

Connect a UTP patch cable (max. 40 meter) between the RJ-45 socket on the back of the controller and the OUT socket on the power supply before connecting the power supply to AC.

When power is applied to the power supply unit, all 3 LEDs will light for 2 seconds and then the “ON” LED will illuminate green. The “CONNECT” LED illuminates green when the controller is connected and receiving power.



### Power supply to fixtures

Connect another UTP patch cable (not included) between the power supply's IN socket and the DMX input on one of the fixtures. If the fixture does not have a RJ-45 socket, you will need a 3-pin or 5-pin XLR-to-RJ-45 adaptor that connects the pins as shown below.

RJ-45 pin	Function
7, 8	signal common
2	data -
1	data +

Connect the fixtures together in a serial chain, output to input. Connect no more than 30 fixtures and keep the total cable run to 300 m (1000 ft.) or less. If the application exceeds these limits, DMX splitter/amplifiers may be used after the power supply to increase the cable run and/or number of fixtures.

### Line terminator

Terminate the end of the data line to prevent reflections that can distort the signal. This is usually accomplished by inserting a suitable 120 ohm termination plug into the DMX output of the last fixture in the line.

### AC power supply cable plug



Warning: Risk of electric shock!

Plug installation shall be performed by a qualified electrician.

A grounding-type (earthed) power plug that fits the local power outlet must be installed on the AC cable for the power supply. Alternatively, you can acquire an IEC power cable with a suitable grounding-type plug from most consumer electronics stores.

When installing the plug connect pins as follows:

- yellow and green wire to ground (earth)
- blue wire to neutral
- brown wire to live

# Setup

## Introduction

The included ColourChaser Designer software allows you to

- Configure the ColourChaser Touch for use with specific lighting fixtures,
- Create and load lighting designs, and
- Update fixture profiles and controller firmware.

This section describes how to configure the controller. Other features are described in the ColourChaser Designer help file.

## Software installation

ColourChaser Designer requires Windows XP.

Install the software as follows:

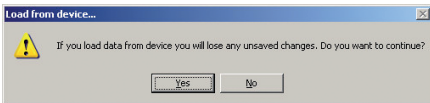
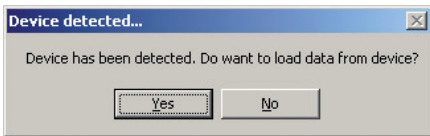
- 1 Place the CD-ROM in the drive. If autoplay is enabled, an installation dialog opens automatically after loading the CD-ROM.
- 2 If the installation dialog does not open, you must run the boot.bat file on the CD-ROM. Select Run from the Start menu, enter [CD-ROM drive letter]:boot.bat, and click OK.
- 3 From the installation menu, select whether you want to download and install the latest version of the software from the Internet (recommended), or the version on the CD-ROM.
- 4 Review and acknowledge the user agreement. Click Next.
- 5 The installation wizard opens. Follow the instructions on screen to complete the process.

## Fixture setup

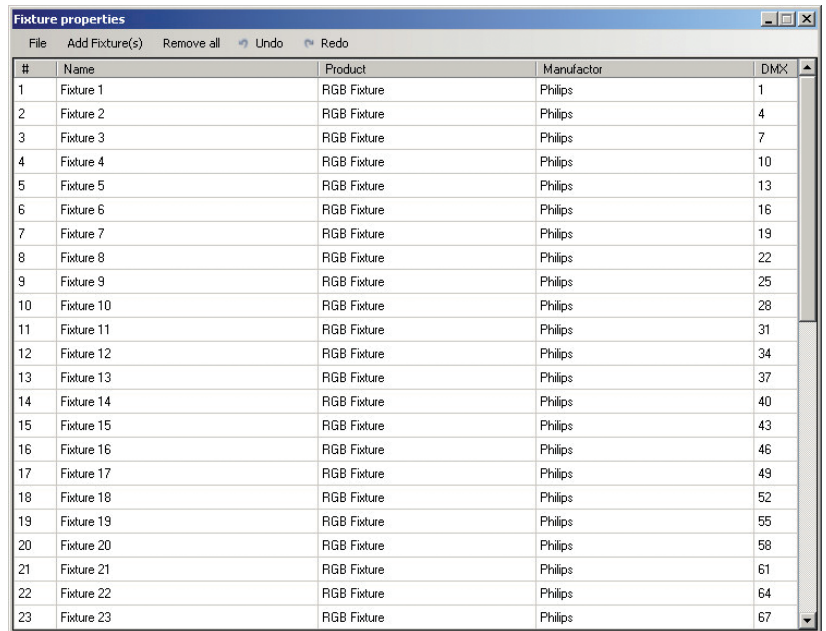
Before first use, and whenever changes are made to the lighting installation, the controller must be configured with the number and types of connected fixtures.

Configure the controller as follows.

- 1 If you have not already done so, install the ColourChaser Designer software.
- 2 Start ColourChaser Designer.
- 3 Connect the ColourChaser Touch to any USB port on the computer using the included USB cable. Do not connect the controller to the PC before the software is installed.
- 4 Within a few seconds, the computer detects the controller and asks whether you want to load data from the device. Click Yes.
- 5 The next prompt alerts you that loading data will cause any unsaved changes to be lost. Click Yes to continue.



- 6 Click Setup > Fixture properties from the main menu. The Fixture properties dialog opens.

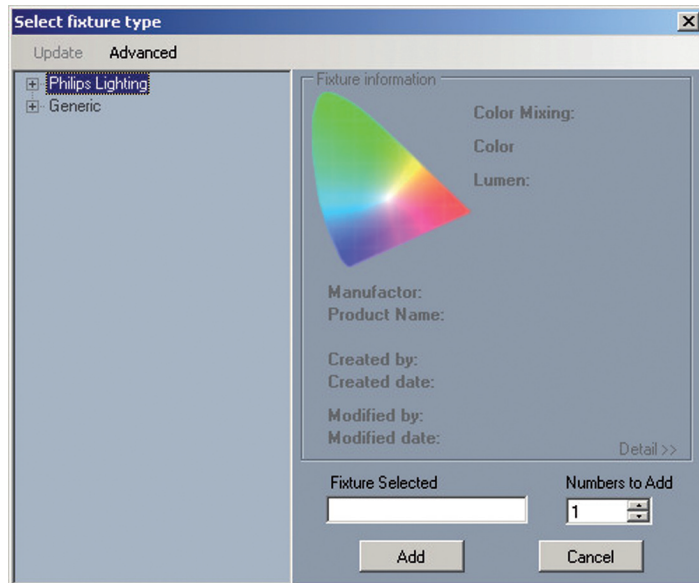


The screenshot shows a window titled "Fixture properties" with a menu bar containing "File", "Add Fixture(s)", "Remove all", "Undo", and "Redo". Below the menu bar is a table with five columns: "#", "Name", "Product", "Manufacturer", and "DMX". The table contains 23 rows of fixture data.

#	Name	Product	Manufacturer	DMX
1	Fixture 1	RGB Fixture	Philips	1
2	Fixture 2	RGB Fixture	Philips	4
3	Fixture 3	RGB Fixture	Philips	7
4	Fixture 4	RGB Fixture	Philips	10
5	Fixture 5	RGB Fixture	Philips	13
6	Fixture 6	RGB Fixture	Philips	16
7	Fixture 7	RGB Fixture	Philips	19
8	Fixture 8	RGB Fixture	Philips	22
9	Fixture 9	RGB Fixture	Philips	25
10	Fixture 10	RGB Fixture	Philips	28
11	Fixture 11	RGB Fixture	Philips	31
12	Fixture 12	RGB Fixture	Philips	34
13	Fixture 13	RGB Fixture	Philips	37
14	Fixture 14	RGB Fixture	Philips	40
15	Fixture 15	RGB Fixture	Philips	43
16	Fixture 16	RGB Fixture	Philips	46
17	Fixture 17	RGB Fixture	Philips	49
18	Fixture 18	RGB Fixture	Philips	52
19	Fixture 19	RGB Fixture	Philips	55
20	Fixture 20	RGB Fixture	Philips	58
21	Fixture 21	RGB Fixture	Philips	61
22	Fixture 22	RGB Fixture	Philips	64
23	Fixture 23	RGB Fixture	Philips	67

- 7 If configuring the ColourChaser Touch for the first time, delete the pre-loaded fixture setup. Select Remove all from the dialog menu.

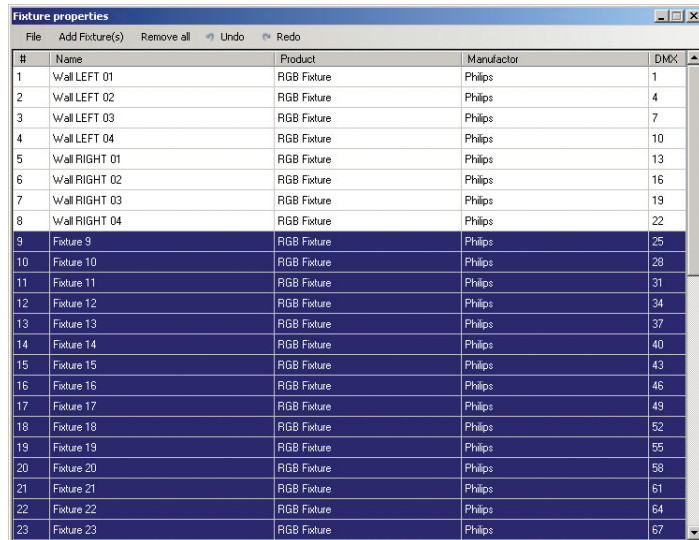
- 8 Add fixtures to the setup. Select Add fixture(s) from the dialog menu. Double-click the manufacturer name in the Select fixture type dialog, then click the model. Enter the quantity of fixtures of this type in the Numbers to Add field. Click Add.



9 The quantity of fixtures is inserted starting at the cursor location.

The following fields are displayed:

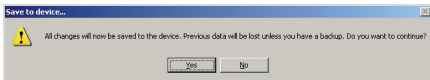
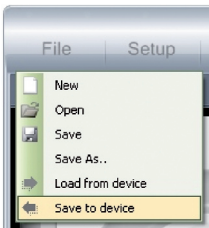
- fixture number (1 to 100)
- fixture name (user designated)
- fixture type
- fixture manufacturer
- fixture DMX channel



The screenshot shows a window titled "Fixture properties" with a menu bar containing "File", "Add Fixture(s)", "Remove all", "Undo", and "Redo". Below the menu bar is a table with five columns: "#", "Name", "Product", "Manufacturer", and "DMX". The table contains 23 rows of data, with the first 8 rows having names like "Wall LEFT 01" and "Wall RIGHT 01", and the remaining 15 rows having names like "Fixture 9" through "Fixture 23". The "DMX" column shows values increasing from 1 to 67. The table is currently displaying rows 9 through 23.

#	Name	Product	Manufacturer	DMX
1	Wall LEFT 01	RGB Fixture	Philips	1
2	Wall LEFT 02	RGB Fixture	Philips	4
3	Wall LEFT 03	RGB Fixture	Philips	7
4	Wall LEFT 04	RGB Fixture	Philips	10
5	Wall RIGHT 01	RGB Fixture	Philips	13
6	Wall RIGHT 02	RGB Fixture	Philips	16
7	Wall RIGHT 03	RGB Fixture	Philips	19
8	Wall RIGHT 04	RGB Fixture	Philips	22
9	Fixture 9	RGB Fixture	Philips	25
10	Fixture 10	RGB Fixture	Philips	28
11	Fixture 11	RGB Fixture	Philips	31
12	Fixture 12	RGB Fixture	Philips	34
13	Fixture 13	RGB Fixture	Philips	37
14	Fixture 14	RGB Fixture	Philips	40
15	Fixture 15	RGB Fixture	Philips	43
16	Fixture 16	RGB Fixture	Philips	46
17	Fixture 17	RGB Fixture	Philips	49
18	Fixture 18	RGB Fixture	Philips	52
19	Fixture 19	RGB Fixture	Philips	55
20	Fixture 20	RGB Fixture	Philips	58
21	Fixture 21	RGB Fixture	Philips	61
22	Fixture 22	RGB Fixture	Philips	64
23	Fixture 23	RGB Fixture	Philips	67

- 10 Repeat step 8 for each type of fixture. The ColourChaser Touch may be configured with up to 10 types of fixtures and a total of up to 100 lights.
- 11 (Optional) You can enter names for the fixtures in the Name column to help identify them.
- 12 (Optional) If you want to save the fixture setup on the computer, select File > Save to file from the dialog menu. Select the file location and name in the Save dialog and click OK.
- 13 Close the Fixture setup dialog. Click Yes at the prompt to keep the changes.
- 14 The fixture setup must now be saved to the controller.
  - Click File in the main window.
  - Click Save to device.
  - Click Yes at the confirmation prompt.



- 15 The ColourChaser Touch is now configured and ready for use. Before operation, the lights must be set to the corresponding DMX addresses assigned in the Fixture setup dialog.



## Troubleshooting

Problem	Probable Cause	Solution
No response from controller when on/off button is pressed	Cables reversed at power supply	Verify that patch cable from controller is connected to power supply's OUT socket
Dynamic designs do not execute when a preset button is pressed	Other lighting settings have been saved in the preset memory	Press and hold the preset button for about 4 seconds until the controller sounds twice
One or more lights have the wrong color, flashes, or blinks randomly	Interference in DMX data line	Verify that the end of the data line is terminated
	Data line length or fixture limit exceeded	Add a DMX splitter/amplifier to the data line
Lights do not respond to controller	Incorrect fixture setup	Configure controller
	Fixtures addressed incorrectly	Verify that fixtures are addressed as per the Fixture setup dialog

# Specifications

## Technical data

### Physical

Dimensions incl. bracket (LxWxH)	110 x 100 x 29 mm
Weight	240 g

### Electrical

Power supply input	100 to 240 VAC, 50/60 Hz (max. 40 meter cable length between PSU and Controller)
Dimensions PSU (L x W x H)	140 x 65 x 36 mm
Controller input (Power over Ethernet)	48 VDC
Power consumption	2 W

### Control and programming

Control interface	DMX 512
Control channels	512
Max. number of luminaires types	10
Max. number of luminaires (groups)	100 (after 30 Luminaires a DMX booster is required)
Recallable memories (presets)	4

### Connections

AC power (power supply)	IEC 3-pin
PC	USB mini-B
DC power in / DMX data out	RJ-45

### Approvals

Power supply  
Controller

cUL/UL, CE, CCC, TUV, FCC  
CE

### DMX pin assignment (from PSU to Luminaires)

RJ-45 Pin  
7,8  
2  
1

Function  
GND  
Data -  
Data +

### Ordering information

ColourChaser Touch Controller      9105 028 99918

# LRC9611 ColourChaser Touch

## Quick guide - Instruction for use



### On/Off - Default white

Press on/off button to set all lights directly to default white



### Color Temperature

Without I, C or S active the touch wheel can be used for direct access to adjust color temperature



### Color

Press C and turn the touch wheel to adjust color



### Intensity

Press I and turn the touch wheel to adjust intensity



### Saturation

Press S and turn the touch wheel to adjust color saturation



### Presets

Press one of the numbered presets to select a static color or dynamic scene (created by the ColourChaser Designer software)

### Real time adjustment of presets

- Use the scroll wheel for real time adjustment of the speed of a dynamic scene, or adjustment of the C, I and S parameters when button is active. When the ColourChaserTouch stops ticking, the wheel has reached the end of its range.
- Changes to a static color or dynamic scene can be saved by pressing and holding the preset button until the controller sounds once, and cleared by pressing and holding until the controller sounds twice (automatically restores the original stored scene).



Although this information has been prepared with extreme care, no rights can be derived from any information and illustration in this manual.

3222 636 42310  
December 2007

# PHILIPS